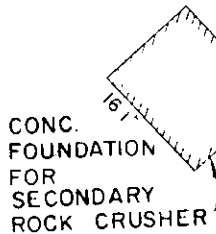


NOTE: REVISED 6-1-71

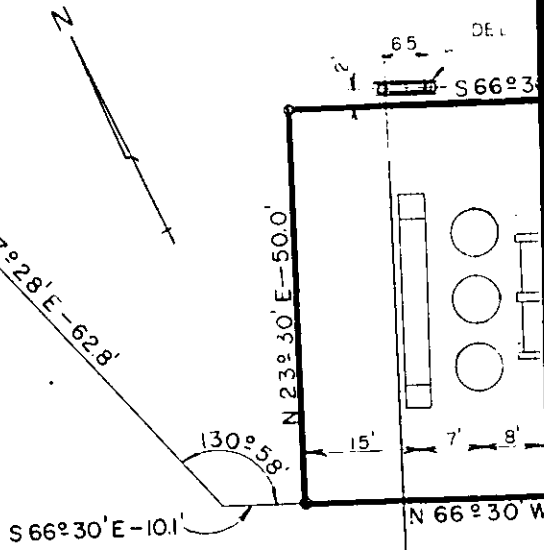


DUKE POWER COMPANY
RELOCATION OF
TRANSMISSION LINE
TO SERVE
VULCAN MATERIALS CO.
"LAKE SIDE PLANT"
NEAR GREENVILLE, S. C.
GREENVILLE COUNTY

SCALE: 1"=100'
BOOK NO. 1165

NOV. 28, 1955
FILE NO 152-142

(Continued on Next Page)



DETAILS of SUBSTATION
SCALE: 1"=20'